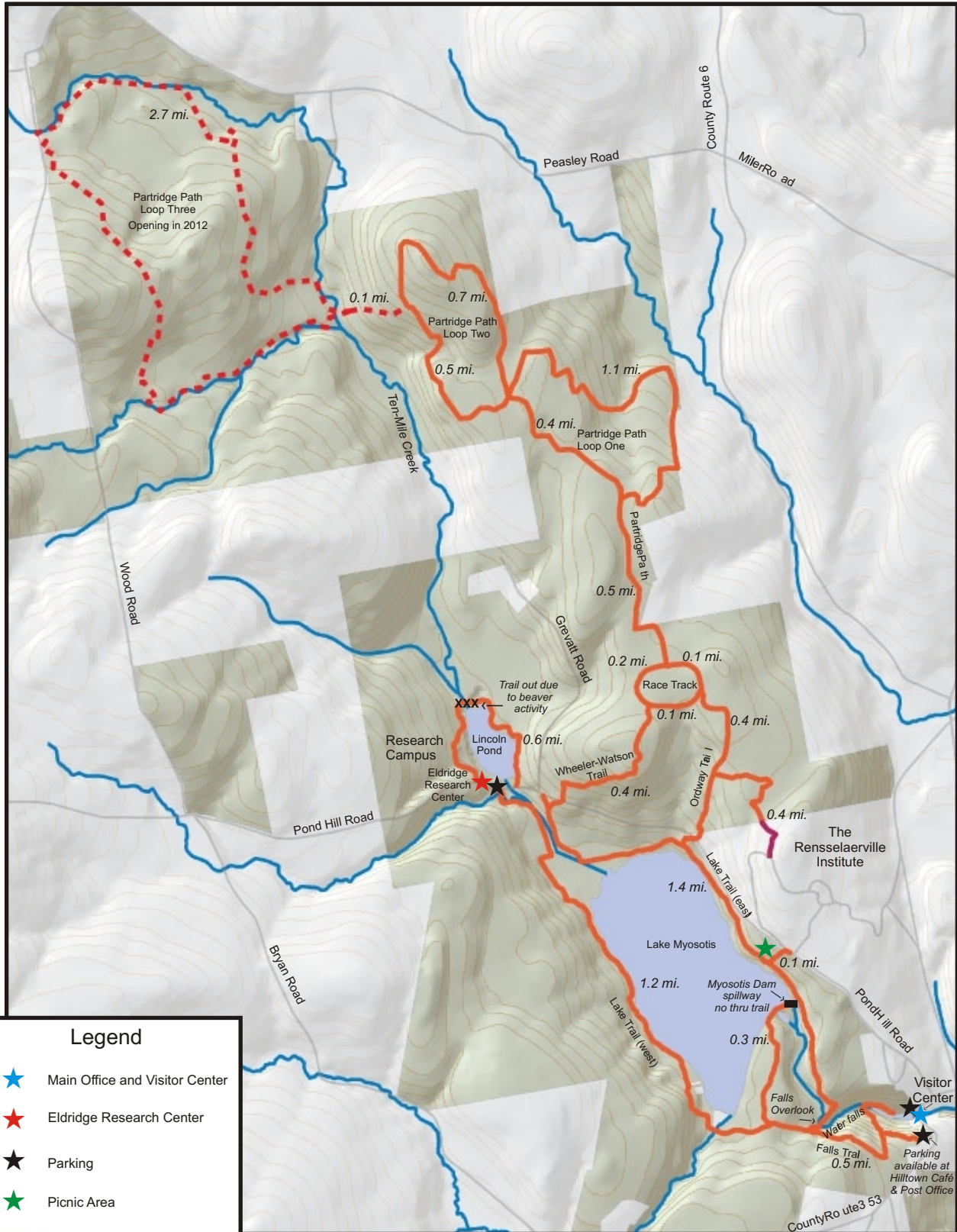


# Huyck Preserve Trail Map



**Legend**

- Main Office and Visitor Center
- Eldridge Research Center
- Parking
- Picnic Area
- Trail
- Planned Trail/open in 2012
- Non-Preserve Trail
- Road
- Lake or Pond
- Stream
- Contour Lines (20 ft.)
- Huyck Preserve Land



## Huyck Preserve Rules and Trail Etiquette

In order to keep our trails pristine and our research areas undisturbed, we ask that you respect the following:

- Please keep pets on a leash.
- Please stay on the trails.
- Horses, bicycles, and motorized vehicles prohibited.
- No hunting or trapping.
- Fishing allowed in Lake Myosotis only.
- Camping and fires prohibited.
- Take only pictures, leave only footprints.
- Trails open down to dusk.